

# The Neighborhood

FABRICS BY CLAUDINE HELLMUTH



Quilt Design: Jean Ann Wright  
Quilt Size: 50" x 62"  
[andoverfabrics.com](http://andoverfabrics.com)



## About The Neighborhood

I'm inspired by the colorful row houses in my Washington, DC, neighborhood. There's a street near me where all the houses are painted a different color — turquoise, pink, bright yellow and orange. It's such a happy street and I wanted to bring that joyful feel to my fabric designs. — *Claudine Hellmuth*

andover

makower uk  
The Henley Studio

Free Pattern Download Available

1384 Broadway New York, NY 10018  
Tel. (800) 223-5678 • [andoverfabrics.com](http://andoverfabrics.com)



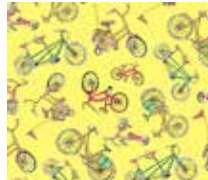
7311-Y 1 yd



7313-YG 1½ yds



7312-YE ¼ yds



7314-Y ¾ yds  
(backing)



7315-YB ½ yd



7316-Y ¾ yd  
(includes binding)



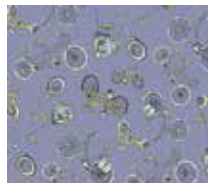
7311-C



7313-C



7312-C



7314-CP



7315-CV



7316-C



7311-T



7313-TG



7312-T



7314-TR



7315-TG



7316-T

FABRICS	10 KITS	20 KITS	30 KITS
7311-Y	1	2	2
7312-YE	1	2	3
7313-YG	1	2	3
7315-YB	1	1	1
7316-Y	1	1	2
A-T-FLASH	1	1	2

BACKING FABRIC

7314-Y	3	5	8
--------	---	---	---

YARDAGE FOR BACKING:  
3½ YDS PER KIT

Fabrics shown are 10% of actual size.

Fabrics used in quilt pattern are shown in black.

Blend with A-T-Flash  
from Textured Solids



A-T-Flash ¾ yd

# The Neighborhood

FABRICS BY CLAUDINE HELLMUTH

andover : makower uk  
The Henley Studio